



Turning Education into Opportunity

President's Report 2025



**Jerusalem
Multidisciplinary
College**
Since 1970





Raising JMC's New Logo

Table of Contents

Message from the President: Prof. Ariela Gordon-Shaag	4
Creating Opportunity, Driving Change	6
Community Outreach	8
Meet Our Students	12
Career Counseling Center	14
Meet Our Alumni	18
Multidisciplinary Research	20
Global Engagement and Internationalization	24
Looking Ahead	30
Student Body	34
Our Faculties	36
Financial Summary	37
Board of Trustees	38
Administration	38
Our Partners	39



Dear Friends,

As I complete my first year as President of JMC, I want to share a moment of reflection during this time of exciting change for our college. In 1996, our institution was founded by Hadassah, The Women's Zionist Organization of America, under the name Hadassah Academic College. For many years, HWZOA provided generous and meaningful support that helped the College grow and thrive. In 2024, JMC and HWZOA mutually agreed to conclude their formal affiliation, allowing the College to step confidently into a new chapter – one defined by independence, renewed vision, and opportunity.

In February 2025, we reintroduced ourselves as Jerusalem Multidisciplinary College (JMC) to better reflect our identity as a multidisciplinary institution and Jerusalem's largest public college. Our new name underscores our deep integration within the city's ecosystem, our commitment to accessible higher education, and our role in meeting the evolving needs of both the local community and the nation.

At JMC, we view higher education as a key pathway to opportunity and a source of skilled professionals vital to Israel's economy and workforce. More than half of our students are the first in their families to pursue higher education. For them, a degree is not only an academic achievement but a bridge to upward mobility and a more secure future. Our new branding, "We believe in you," reflects our mission to serve as a gateway to that transformation.

Our mission is twofold: to make higher education accessible to all, and to offer career-focused degrees that prepare our students to thrive in a rapidly evolving job market. JMC actively engages with industry leaders and employers to ensure our academic programs align with job market demands. We teach both field-specific expertise – such as the integration of AI in industrial design – and the universal competencies that today's employers value most: analytical thinking, creativity, adaptability, and resilience. AI literacy, in particular, is being integrated across all disciplines to ensure that every JMC graduate is future-ready.

Adaptability and responsiveness to national needs continue to guide our next steps. I'm proud to share that in response to the national shortage of rehabilitative healthcare professionals following October 7, JMC will establish a new School of Rehabilitative Healthcare. By training experts in physical and psychological recovery – including physiotherapists, speech-language pathologists, optometrists, social workers, psychologists, health systems managers, and other essential healthcare professionals – we aim to enhance public well-being and support national recovery efforts for years to come. Uniting these disciplines under one roof reflects our strong belief in the power of multidisciplinary education and research to drive innovation and deliver lasting impact.

JMC's dedication to public service reaches far beyond the classroom. Our professional and student-staffed clinics in Aphasia, Audiology, Speech and Language Therapy, and Optometry continue to provide essential care to Jerusalem's diverse populations. Since the onset of the war, we have expanded our reach nationwide through mobile clinics, providing vision and hearing screenings as well as psychosocial support for soldiers, evacuees, and the injured. From developing diagnostic protocols for war-related hearing damage to pioneering treatments for children who were held hostage, we are advancing healthcare while supporting the long and complex journey of recovery for those most affected.

This past year and a half have tested us all. Yet, through the uncertainty and challenges of war, our students and faculty have shown extraordinary resilience. We have worked tirelessly to support every member of our community, especially those called repeatedly to reserve duty.

Even in these difficult times, the spirit of coexistence continues to define our campus. We strive to cultivate a learning environment rooted in mutual respect, shared purpose, equal opportunity, and a brighter future for all.

I am especially grateful to the Executive Committee of the Board of Trustees, under the chairmanship of Eli Bahar, whose members help guide our leadership and ensure that the college remains well-governed and mission-driven. In addition, on behalf of all of us at JMC, I also extend my heartfelt thanks to you, our friends and supporters, for your unwavering encouragement and partnership.

I hope you find this report both meaningful and inspiring as it highlights the shared achievements of our entire JMC community – faculty, staff, and students alike – in the face of adversity. Together, we are empowering the next generation of professionals, advancing access and excellence in higher education, and making a lasting impact on society and the workforce.

In partnership,

A handwritten signature in blue ink that reads "Ariela Gordon". The signature is fluid and cursive, with the first name "Ariela" being more prominent than the last name "Gordon".

Prof. Ariela Gordon-Shaag
President



**Creating Opportunity,
Driving Change**

Jerusalem Multidisciplinary College (JMC) is more than a place of learning. We encourage opportunity, inclusion, and renewal in Israel's capital, creating lasting impact through education, research, and community engagement. We're committed to preparing students from across the nation for purposeful careers, advancing social mobility, and strengthening Jerusalem's social and economic fabric.



Career-Focused Education

JMC offers diverse programs that meet the evolving needs of Israel's economy. With an emphasis on practical training and industry alignment, our graduates enjoy high job placement rates. We're proud to play a vital role in addressing urgent national priorities such as the growing demand for skilled professionals in rehabilitative healthcare.

National Reach

Rooted in Jerusalem, JMC attracts students from across Israel. Our broad, national reach creates a dynamic, multicultural campus where diverse backgrounds and perspectives converge. Our student body reflects the richness of Israeli society and contributes to a vibrant, authentic, and inclusive learning environment.



Gateway to Social Mobility

For the majority of our students – Jewish and Arab alike – JMC offers a transformative opportunity. Most are the first in their families to pursue higher education, often overcoming significant socioeconomic barriers. Our first-gen graduates become role models within their communities, paving the way for future generations.

Urban Revitalization

JMC brings new energy to the heart of Jerusalem, drawing young people to live and study in the city we call home. Our professional and student-staffed clinics in Audiology, Speech and Language Therapy, and Vision Care provide essential services to underserved populations, deepening our roots and helping the city – and its residents – thrive.





Community Outreach

JMC's deep commitment to community engagement is central to its mission. From delivering essential healthcare to thousands of Jerusalem residents, to supporting national recovery efforts and enriching the city's cultural fabric, JMC students and faculty continue to serve as active partners in strengthening both the local community and Israeli society at large.

300+
students

volunteered in non-
profit Jerusalem-based
community organizations

Number of community clinic visits in 2024



Adler Aphasia
Center

1,422



Audiology

2,478



Speech &
Language
Therapy

2,204



Optometry

7,986



Highlights



Beyond the services provided by JMC's on-campus community clinics, faculty and students contributed their expertise to the broader community. Communication Disorders staff offered free hearing exams and organized a series of online professional lectures to support displaced speech therapists from the north. Social Work professionals provided psychosocial support for soldiers with PTSD, while Medical Laboratory Sciences assisted hospitals and clinics by stepping in for lab technicians called to reserve duty.



The Adler Aphasia Center at JMC – the only one of its kind in Israel – draws clients from across the country, offering ongoing support to people with aphasia and their families. Integrated into JMC's Communication Disorders program, it trains dozens of students annually and serves as a national resource for best practices in aphasia care.



Centrally located on JMC's campus in downtown Jerusalem, the Azrieli Gallery hosts year-round exhibitions featuring works by students and graduates from the Dan Department of Creative Human Design and Photographic Communication departments, alongside pieces by established artists. The gallery plays an active role in revitalizing the city center by drawing the public to its exhibitions and cultural events.



In partnership with Hadassah Medical Center and the Jerusalem Municipality, students from the Optometry Honors Program conducted comprehensive vision screening tests at local Jerusalem senior day centers. The events not only benefited seniors but also gave students invaluable clinical experience. In addition, faculty provided educational sessions on maintaining eye health.



For over a decade, JMC has offered a unique, career-focused bachelor's degree program tailored to ultra-Orthodox (Haredi) men and women, preparing them for high-demand fields such as Biotechnology, Medical Laboratory Sciences, Communication Disorders, Optometry, and Social Work. "Campus Strauss" enables highly motivated Haredi students to pursue higher education, successfully integrate into the workforce upon graduation, and ensure a better future for themselves and their communities.

Supporting Our Student Reservists

Since the brutal attack on Israel and the outbreak of war on October 7, 2023, more than 500 male and female students from JMC have courageously served in the IDF reserves. These student-soldiers put their studies, families, and jobs on hold to help defend the nation.

Upon their return to campus, the college recognized the unique challenges they faced. Responding with a clear message, "We believe in you," JMC provided special tuition scholarships made possible by the generosity of friends from around the world. To help them resume their academic journey, student reservists also received personalized tutoring

by both faculty and fellow students to catch up on missed lectures and coursework. The college extended special consideration in the admissions process to first-year applicants who had served extended periods in the reserves.

Student reservists continue to receive special support and consideration to help ease their transition back into academic life. JMC's "President's Program for Reservists" supports students who have served over 28 days in reserve duty. The program includes personalized mentoring, mental health counseling, and a scholarship for those who served 60 days or more.

Meet Our Students



Mika Oz

Optometry student and military combat paramedic Mika Oz exemplifies the values of academic and social excellence at Jerusalem Multidisciplinary College. Raised in Moshav Tel Adashim near Afula, Mika grew up in a deeply Zionist and service-oriented family, always knowing she would pursue a career in a medical field. Ultimately, she found the perfect fit in optometry.

Over the past year, Mika completed more than 200 days of reserve duty in Gaza and Lebanon – often as the only woman in her unit. Despite the physical and emotional toll of her service, she remained fully committed to her studies, completing the academic year with distinction thanks to strong support from JMC’s Department of Optometry, which she calls “a second home.”

Mika’s achievements enabled her to begin her master’s in Optometry before finishing her undergraduate degree – all while continuing to serve. She also volunteers with Magen David Adom, and is an active member of JMC’s emergency response team.

In recognition of her courage, resilience, and service, Mika was chosen from dozens of nominees to receive JMC’s 2024 Social Impact Award, presented in memory of former student Michael Gal z”l, who fell in Swords of Iron. “For me,” she says, “being called to serve is not a duty, but a privilege and an honor.”

l-r: Kfir Shabu, Mahmoud Zayid



Kfir Shabu & Mahmoud Zayid

Kfir Shabu and Mahmoud Zayid come from different worlds – Kfir, a proud husband and father of two who built his career from the ground up at Hadassah Medical Center in Jerusalem, and Mahmoud, a 23-year-old from East Jerusalem, the first in his family to graduate high school and pursue higher education. Their paths converged at JMC in the Health Systems Management program, where they quickly became close friends and champions of each other's success.

For Kfir, returning to school at 37 after a lifetime of personal challenges was no small feat. Raised by his grandmother and navigating the boarding school system without parental support, he had long prioritized survival over education. When he first applied to JMC, he didn't meet the admissions criteria. But the head of the department recognized his potential and offered him a conditional acceptance, contingent on completing his first year with a minimum grade. Kfir not only met that requirement – he went on to earn a spot on the Dean's List, twice. "The college believed in me before I believed in myself," he shares.

Now in his final semester, Kfir applies what he learns in class to his role managing procurement and logistics at Hadassah's two hospitals. "It's very practical," he says of the program. He has represented JMC abroad twice through international exchange initiatives, and also serves as a teaching assistant.

Mahmoud's journey was equally transformative. After high school, he spent a year cleaning the streets of Jerusalem's ultra-Orthodox neighborhoods – often passing the college. Eventually, he and a friend decided to apply. "I came in with no clear plan or direction," he says, "but JMC helped me discover my potential."

A top student, tutor, and mentor, Mahmoud also coordinates Ma'ayan Bamidbar, a Jewish-Arab coexistence scholarship program. He recently received a Social Impact Award for his leadership and community engagement. "Not everyone in my community supports what I'm doing, but I try to be a bridge." Mahmoud is in his final year and considering a master's degree and even a future in academia. "I've found I have a talent for teaching, and I want to stay part of this community and keep giving back."

Both students have been recognized for their remarkable journeys: Kfir for academic excellence and Mahmoud for social impact. Their achievements – and the deep friendship they've built along the way – reflect the spirit of JMC: a college that offers real opportunities and supports every student's growth, connection, and success.



Career Counseling Center

Propelling Students Forward

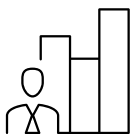
JMC's Career Counseling Center, established in partnership with the Rothschild Caesarea Foundation, is dedicated to equipping students and graduates with the tools they need to launch meaningful careers in their chosen fields. From the start of their studies, the Center encourages students to gain hands-on, marketable experience in their field through internships, community service projects, or roles in JMC's own network of community clinics.

Drawing on the College's strong ties with local industries and organizations in Jerusalem and across Israel, the Center offers personalized career guidance, practical workshops, employer meetups, job fairs, and online access to a wide range of job opportunities. With this comprehensive support, students not only graduate with a degree but with a clear path forward.

Over the past three years:

90% of JMC graduates secured employment in their chosen field upon graduation.

Career Services at a Glance



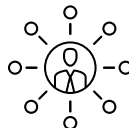
Industry Site Visits



Job Fairs



Internships
& Academic
Courses



Career
Workshops



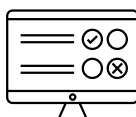
Personal
Career
Counseling



Employment
Support



Placement
Services



Job Listings



Graduate
Surveys



Mentorship
Programs

Career Opportunities Portal

The Center's website continues to serve as a vital resource for students and alumni, including a job opportunities portal listing opportunities across all academic disciplines. Over the past year, 1,850 positions were posted by nearly 300 employers. In total, JMC students and alumni submitted 3,393 resumes through the portal – including 1,946 Arab applicants, 607 Haredi applicants, and 840 general applicants – reflecting the platform's broad reach and impact across diverse communities.



Internship Program with Taboola for Computer Science Graduates

Launched in April 2025 in partnership with Taboola (a digital advertising platform best known for its content recommendation engine), the Career Center, and the Department of Computer Science, this new program gives graduates the chance to jumpstart their careers in high-tech.

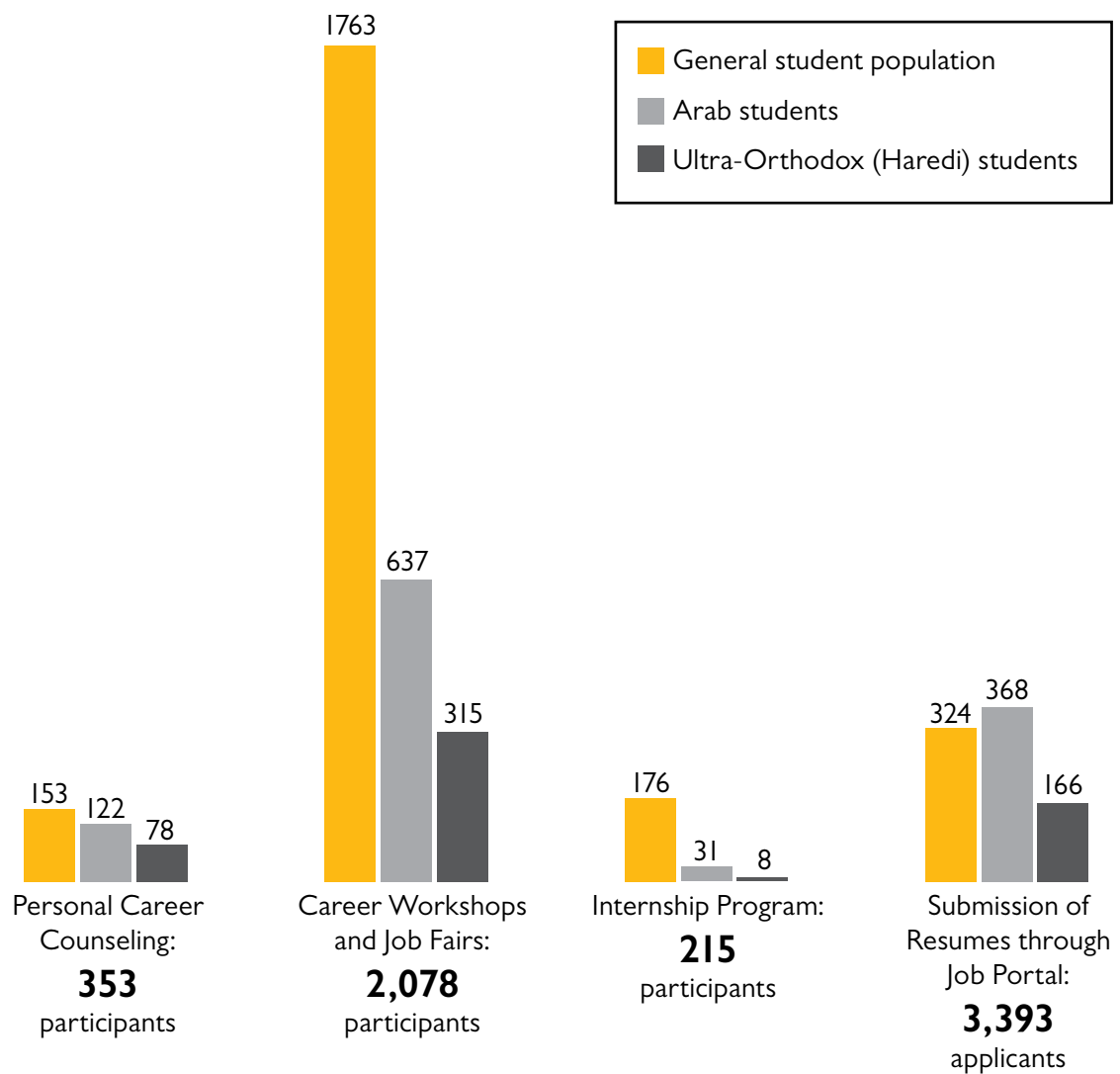
In the wake of the war, Israel's high-tech sector has experienced significant cutbacks, making it harder than ever for junior candidates to land their first job. With seasoned professionals flooding the market, recent graduates are up against tough odds. This initiative gives JMC alumni an edge, bridging the gap between classroom and career and opening real doors into one of the country's most competitive industries.

Participants complete a focused two-month internship, followed by a one-year paid position at Taboola. The program offers hands-on experience in a cutting-edge development environment, working side-by-side with top industry professionals.





Career Center Engagement in Numbers



Meet Our Alumni



Devora Gross (Class of 2018)

Devora Gross, a graduate of JMC's Biotechnology program, was raised in a supportive Haredi-Zionist home in Petah Tikva, where curiosity and a love of learning were core values. She had always been fascinated by biology and the inner workings of the human body, and when the opportunity arose to study at JMC's "Campus Strauss" for ultra-Orthodox "Haredi" students, she took it.

For a young woman committed to both academic excellence and a Haredi lifestyle, Campus Strauss was the perfect fit – offering a high-level curriculum with faculty who respected and supported her background.

After completing her bachelor's degree, Devora began a master's in biopharmaceutical sciences at Hebrew University while also serving as a teaching assistant at JMC. After completing her master's, she continued in the role for two and a half years under the mentorship of Dr. Ilana Caspi, whom she credits with recognizing her potential and encouraging her academic journey. The experience sparked a passion for higher learning, teaching, and working with students. Today, Devora is pursuing her PhD in immunology at Tel Aviv University, focusing on Crohn's and colitis.

"JMC's Campus Strauss opened the door to academia in a way that completely resonated with who I am and where I come from," Devora shares. "I very quickly understood that I didn't have to choose between my Haredi values and my academic ambitions – both could thrive together."



Tzlil Malka (Class of 2024)

Tzlil Malka, a graduate of JMC's Politics and Communication bachelor's program, grew up on Kibbutz Merhavia in northern Israel. Initially set on a diplomatic career, she chose JMC for its international relations and diplomacy focus, weekly study format, and strong emphasis on gaining real-world experience alongside academic learning.

Thanks to the program's concentrated schedule, Tzlil was able to combine her studies with a position at Israel's Foreign Ministry. In her third year, she interned at ISRAEL-IS, a nonprofit dedicated to strengthening Israel's global image through advocacy training, peer-to-peer dialogue, and innovative tools like virtual reality and artificial intelligence.

Impressed by her initiative and passion, ISRAEL-IS offered Tzlil a full-time position after graduation. Today, she trains students and young professionals to represent Israel and engage global audiences across digital and in-person platforms.

"JMC's program offers more than just knowledge," says Tzlil. "We gained professional exposure and hands-on training while studying. By the time I graduated, I felt fully prepared to take my first career step – and my internship opened an incredible door for me."

We believe in you

A photograph of two female scientists in a laboratory setting. They are both wearing white lab coats and safety glasses. The scientist on the left is using a blue pipette, while the one on the right is holding a yellow pipette. They are looking at a rack of yellow test tubes. A digital overlay of a molecular structure is visible on the right side of the image.

Multidisciplinary Research

At the Forefront of Research with Real-World Impact

At Jerusalem Multidisciplinary College (JMC), research is a driving force for national resilience and global innovation. By bridging diverse fields—from health sciences and psychology to design, education, and technology—our multidisciplinary approach fosters more holistic solutions to complex societal challenges. Whether advancing mental health support for vulnerable families, developing trauma-informed rehabilitation for children released from captivity, or delivering critical care to displaced populations, JMC researchers are confronting today's most urgent issues head-on. Their work has far-reaching implications—informing public policy, improving lives, and contributing vital knowledge in times of crisis and beyond.



Diagnosing War-Related Hearing Damage

In response to October 7, Dr. Deborah Brand and Dr. Shai Tsurdeker (Communication Disorders Department) led the creation of a national protocol for diagnosing combat-related hearing damage. Officially adopted by the Ministry of Health, the guideline is now in use across Israel, with nationwide training for speech-language pathologists to ensure proper care for those affected.



Advancing Childhood Myopia Research

A JMC-led team combining expertise from optometry with computer science—Dr. Einat Shneur, Dr. Ravid Doron, Prof. Ariela Gordon-Shaag (President, JMC), Dr. Ayelet Goldstein, and Dr. Lisa Ostrin (University of Houston)—received a Binational Science Foundation grant to study childhood myopia. Using AI and Israel's diverse population, they aim to predict disease progression and develop personalized treatment. The team also became the first in Israel to receive the AAOF—Meta Myopia Grant for a machine learning-based study on myopia management.



Supporting Parents of Children with Special Needs in Times of Crisis

A multidisciplinary team from Psychology, Social Work and Communication Disorders – Dr. Yitshak Alfasi, Dr. Ruth Maytles, and Prof. Avi Besser – examined the psychological impact of October 7 on Israeli parents, revealing significantly higher stress, anxiety, and reduced mental health among those raising children with special needs. The study highlights key mediating factors – such as lower parental competence and meaning in life – and calls for targeted mental health and resilience-building interventions to support vulnerable families in times of crisis.



Facilitating the Rehabilitation of Children Released from Captivity

Dr. Ayelet Rosenthal developed a comprehensive treatment protocol for the rehabilitation of children abducted and held hostage during armed conflict, particularly those released from Hamas captivity. Grounded in trauma theory, global case studies, and children's rights paradigms, the study offers guiding principles and courses of action for restoring dignity, wellbeing, and healthy childhood development. It also provides practical policy recommendations for governments and aid organizations, emphasizing a child-centered, rights-based approach.



Prioritizing Vision Care for Displaced Populations

Following the mass evacuation of Israelis after the October 7 attacks, a team led by Dr. Hadas Ben-Eli (Chair of the Dept. of Optometry, JMC), Prof. Ariela Gordon-Shaag (President, JMC), and Dr. Itay Chowers (Chair of the Dept. of Ophthalmology, Hadassah Medical Center), established mobile ophthalmic clinics in the Dead Sea region to provide urgent vision care needs for displaced individuals. The team provided examinations to 800 evacuees and distributed 700 pairs of glasses, restoring not just sight but a sense of stability amid crisis. This work sets the stage for investigating emergency vision care needs and solutions for populations affected by conflict and displacement.



Assessing Trauma and Resilience Among Holocaust Survivors Post-October 7

Led by Dr. Ruth Maytles (Social Work Department) in collaboration with Bar-Ilan University and Ashkelon Academic College, this study examined the psychological impact of the October 7 attacks on Holocaust survivors. Holocaust survivors with prior PTSD reported significantly higher anxiety, depression, and trauma symptoms compared to other elderly groups. Yet levels of hope, daily functioning, and community resilience remained similar across all groups – highlighting the strength and perseverance of Holocaust survivors in the face of renewed crisis.



Designing Rehabilitation Through Collaborative Innovation

For over a decade, JMC's Dan Department of Creative Human Design has partnered with the rehabilitation team at Hadassah Medical Center at Mount Scopus on an applied research initiative. Led by Ifat Keinan and Liran Elbaz-Bloch, the project brings together design students, therapists, and patients to co-develop assistive tools and therapeutic solutions in response to real-world clinical needs. Through interviews, observations, and shadowing, the teams identify key challenges in rehabilitation and develop user-centered interventions for direct use in physiotherapy and occupational therapy departments.



8

Participants
in Semester
Exchange

136

Participants in
Joint Virtual
Courses

44

Participants in
International
Short-Term
Course Visits
to Partner
Institutions

7

International
M. Optom.
Graduates

27

Total Number
of Erasmus+
Mobility
Agreements
and Bilateral
Agreements

Preparing Students for an Interconnected World

At Jerusalem Multidisciplinary College (JMC), global engagement is a strategic priority and a key element in preparing our students for today's interconnected world. We equip students with the skills, cultural fluency, and adaptability necessary to thrive across diverse professional and academic settings. Through international exposure and cross-cultural experiences, students develop a global mindset, gaining the confidence to build and engage with global networks that support their long-term success.

JMC's internationalization strategy aligns with national policy and is guided by Israel's Council for Higher Education. Since launching our International Office in 2020, we've expanded global engagement through academic exchanges, curriculum development, and research collaborations, while advancing English integration and international teaching practices.

Global Curriculum and English Language Proficiency

As part of our commitment to internationalizing the curriculum, we continue to expand globally-focused academic programs and English-taught courses. These efforts increase English proficiency, promote critical and global thinking, and enhance the employability of our graduates. Recognizing that language skills are essential across all roles, JMC also offers English courses for administrative staff, led by faculty from the Department of English.

Mobility and Global Collaboration

At JMC, we support students and faculty in building international partnerships through academic exchange, joint research and teaching, and participation in international conferences and forums – expanding our impact and visibility worldwide. Recent initiatives include exchange programs with Germany, the Czech Republic, Latvia, Cyprus, and Spain, as well as a new international online learning course with a partner institution in Greece.

Internationalization at Home

We integrate global and intercultural perspectives into course content and pedagogy, across all disciplines. Through virtual exchanges, visiting faculty, and international delegations, we bring the world into the classroom, facilitating global experiences right here in Jerusalem for all students – whether or not they travel abroad during their studies.

50

Researchers at JMC are Engaged in **110** National and International Collaborations



Highlights

International Master's in Optometry and Vision Science

Seven licensed optometrists from around the world completed JMC's two-year degree program which integrates online academic instruction with hands-on clinical training in advanced areas such as contact lenses, dry eye, low vision, sports vision, and vision therapy.



OPTIL Program for French-Speaking Immigrants

In partnership with the Ministry of Aliyah and Integration, JMC launched OPTIL—a tailored undergraduate program in Optometry for French-speaking immigrants. With 27 students in its first cohort, the program offers French-language instruction and intensive Hebrew study, preparing for transition to Hebrew instruction from year two. Participants benefit from scholarships and full support to ease their integration and help secure employment upon their graduation.



Erasmus+ Student Exchange in Germany

Three students from the DAN Department of Creative Human Design completed a semester of study at Aalen University in Germany through the Erasmus+ EU student exchange program, gaining valuable international experience while earning academic credit toward their degrees.

Joint Blended Course with Passau University

Students from JMC and Germany's Passau University took part in a joint blended course in Cross-Cultural Entrepreneurship, combining virtual collaboration with an in-person seminar in Bavaria. The program included visits to leading innovation centers in the region, and culminated in final projects presented by five JMC students and their German peers.



Senior Delegation from Škoda Auto University

JMC welcomed a senior delegation from Škoda Auto University (Czech Republic) to explore joint initiatives in innovation, entrepreneurship, design, and 21st-century skills. The visit concluded with plans for faculty exchanges and student workshops, and the signing of an MOU to strengthen institutional collaboration.

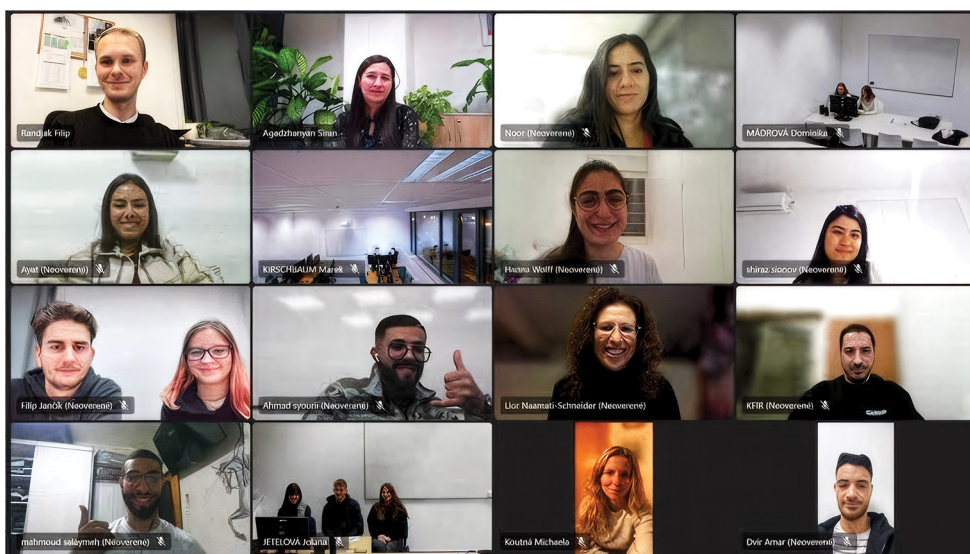
UAS4EUROPE Academic Forum

In December, JMC joined the kick-off meeting of the UAS4EUROPE Forum—a network of European applied sciences universities advancing research and academic collaboration. As one of just two Israeli institutions in the forum, JMC's delegation visited Munich and Nuremberg with support from the Bavaria-Israel Office.



Clinical Internship in the UK

Laila Aboulan, a student in JMC's international M.Optom. program in Optometry and Vision Sciences, completed a clinical internship in the UK under the guidance of Prof. Simon Barnard, a guest lecturer at JMC. Laila gained hands-on training with diverse patients and valuable insights into the broader scope of optometric care in the UK.



Strategic Healthcare Management Course in the Czech Republic

In Spring 2025, 10 JMC students joined international peers from Moravian College for a blended online course on nonprofit healthcare leadership, co-led by Dr. Lior Naamati-Schneider. The program combined virtual learning with a 5-day academic visit to Olomouc, exploring innovation, ethics, AI, and multiculturalism in healthcare.



"JMC's exchange program really boosted my confidence. It taught me how to adapt to new situations, work with different people, and become a better problem-solver and leader."

Shahar Pinto, 3rd Year Student,
Management – Data Sciences Track

"As a result of JMC's mobility program, I was accepted to join the Israeli Antiquities Authority as part of a team of 3D image analysts. The experience gave me a significant edge in my field."

Nir Lutati, 4th year student – Photographic
Communications

Looking Ahead



הנחיות לפעילות גופנית מותאמת אישית, ניתוח ביומטרי ומעקב אחר התקדמות האפליקציה יכולת גם זמן הדרכה אינטראקטיבי ותואמת לטכנולוגיה לבישה כמו APPLE WATCH לשיפור חווית האימון באמצעות נתונים משולבים.

על ידי שימוש קבוע במערכת MEGA קשישים יוכלו לשפר באופן משמעותי את חוזק הידיים וגמישותן, להפחית את הסיכון לשברים, ולשמור על בריאות הידיים באופן עצמאי.

סד מתקדם זה מבטיח ביצוע בטוח ויעיל של התרגילים, ומציע משוב מיידי והדרכה מותאמת אישית למיעט פציעות.

סד - פונקציונלי, ארגונומי, אופנתי ואזורי - מותאם לשתי הידיים, וכולל מפרקים שמאפשרים תנועה טבעית ומלאה. הסד שמעוצב בגוונים אפורים, המחזיקים להעדפותיהם של מבוגרים, ובגדלים שונים - נותן מענה לצרכים מגוונים, ומבטיח נוחות, יעילות והתאמה מושלמת לכל משתמש.

הסד נחמך על ידי אפליקציה שמפעילה תוכניות חימום, ומספקת

תהליך ההזדקנות מלווה בדרך כלל באובדן מסת השרירים ובפגיעה באולסטיות שלהם. משימות יומיומיות הפוכות למאתגרות יותר והסיכון לשברים עולה.

סד MEGA פותח כדי לסייע לקשישים לשפר את תפקודי הידיים, באמצעות תרגילים בטוחים ויעילים. הסד מיוצר בהדפסה תלת-ממדית, וכולל חיישני לחץ ותנועה מתקדמים כדי לספק נתונים בזמן אמת על תנועות הידיים ועוצמת השריר.



Recognizing the urgent needs of today and the challenges of tomorrow, JMC's forward-looking strategy includes initiatives that address critical national priorities while positioning the college as a driving force in healthcare education, resilience building, and community development.



A New School for Rehabilitative Healthcare

JMC is advancing plans to establish a new School for Rehabilitative Healthcare to meet Israel's urgent need for well-trained health professionals. Even before the war, the country faced a shortage of healthcare professionals – now deepened by over 13,500 soldiers in rehabilitation and tens of thousands of civilians requiring long-term care.

The new school will unite existing departments – including Psychology, Social Work, Communication Disorders, Optometry, Medical Laboratory Sciences, and Industrial Design – under a single, multidisciplinary roof. By bringing these vital fields together, JMC will deliver integrated, field-informed education and care, preparing the next generation of skilled professionals to enter the workforce equipped to help Israel heal and rebuild.



Inclusive Industrial Design Students Create Special Wheelchairs for Toddlers Unable to Move Independently

Expanding Capacity, Deepening Impact

With the current campus operating at full capacity, the new facility will address JMC's pressing space constraints, enabling the college to grow its enrollment, serve a larger and more diverse student body, and launch additional programs.

The School for Rehabilitative Healthcare plans to introduce new programs developed in direct response to emerging national needs, including a bachelor's in Physical Therapy (in partnership with Hadassah Medical Center), a master's in Social Work focused on community trauma, and a master's in Psychology specializing in rehabilitative care.

Complementing this expansion, JMC is also strengthening its broader academic foundation. New investments in multidisciplinary research, faculty advancement, and academic innovation – including the launch of a new BSc in Data Science – will further our impact across higher education, healthcare, and industry in Israel.

Moreover, JMC remains committed to student-centered higher education, providing personalized guidance and opportunities for career advancement and lifelong learning to empower our graduates in their professional pursuits.



A Continued Commitment to a Flourishing Jerusalem

JMC's main campus will remain in the heart of downtown Jerusalem, serving students from across the city and contributing to Jerusalem's future as a modern, dynamic, and vibrant capital. The planned School for Rehabilitative Healthcare will be housed in a newly constructed building located at the city's entrance, offering convenient access for students, faculty, and the general public. This expansion reflects JMC's broader vision: to strengthen Jerusalem's social and economic fabric by fostering academic excellence, advancing healthcare, and creating new opportunities for engagement across the city.

A National Model for Resilience Care



The new School for Rehabilitative Healthcare will also house a dedicated Resilience Center, developed in partnership with the Jerusalem Municipality's Psychological Services. Serving as a national model for resilience innovation and care, the Center will offer trauma-informed mental health services, culturally sensitive support, and resilience education for the entire JMC community.

The establishment of the Resilience Center represents a lasting investment in the well-being, strength, and future of Jerusalem's young leaders, ensuring that students from all backgrounds have the support and tools they need to thrive. JMC will train therapeutic teams and faculty responders, establish emergency preparedness protocols, and embed resilience practices into teaching and student engagement. Moreover, the Center will serve as a hub for research and professional development in resilience and crisis response, educating stakeholders across Jerusalem and extending best practices beyond our campus walls.

Strategic Partnerships and Local Collaboration

JMC aims to cultivate new partnerships with key stakeholders throughout Jerusalem – including industry leaders, social welfare agencies, local healthcare providers, and the city's growing high-tech and biomed sectors. These collaborations will further enrich our academic programs, expand hands-on training opportunities, and ensure that our graduates are well-positioned to contribute meaningfully to the city's social and economic landscape.



5,000 Students Strong





**We
believe
in you**



Our Faculties

Interdisciplinary Faculty for Science, Health, and Society

Prof. Nissim Alon, Chair

Biotechnology (B.Sc.)

Dr. Danny Zeevi, Chair

Communication Disorders

(B.A. and M.A.) Prof. Avi Besser, Chair

Computer Science (B.Sc. and M.Sc.)

Prof. Michael Berman, Chair

DAN Department of Creative Human Design (B. Des.),

Ms. Liran Elbaz-Bloch, Chair

Margulies Family Department - Development of Children with Special Needs (M.A)

Prof. Asher Ornoy, Chair

Environmental Sciences (B.Sc.)

Dr. Geula Sharf, Chair

Health Systems Management (B.A.)

Prof. Nissim Alon, Chair

Medical Laboratory Science

(B.Sc. and M.Sc.)

Prof. Ayelet Arbel-Eden, Chair

Optometry and Vision Science

(B. Optom. and M. Optom.)

Dr. Hadas Ben-Eli, Chair

Interdisciplinary Faculty for Society and Community

Prof. Yoram Eden, Chair

Economics and Accounting (B.A.)

Prof. Yoram Eden, Chair

School of Management (B.A. & M.A.)

Dr. Iris Yaffe, Chair

Photographic Communications (B.A.)

Dr. Doron Altaratz, Chair

Politics and Communication (B.A.)

Prof. Doron Shultziner, Chair

Psychology (B.A.)

Dr. Shani Oppenheim-Weller, Chair

School of Social Work (B.S.W)

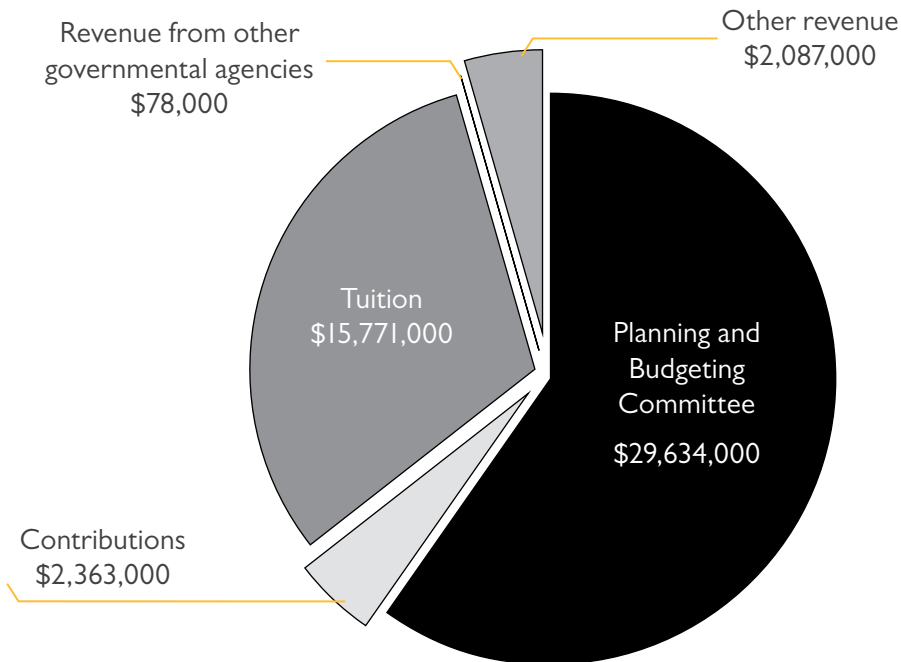
Prof. Haya Itzhaky, Chair

Financial Summary

Fiscal Year 2024-2025

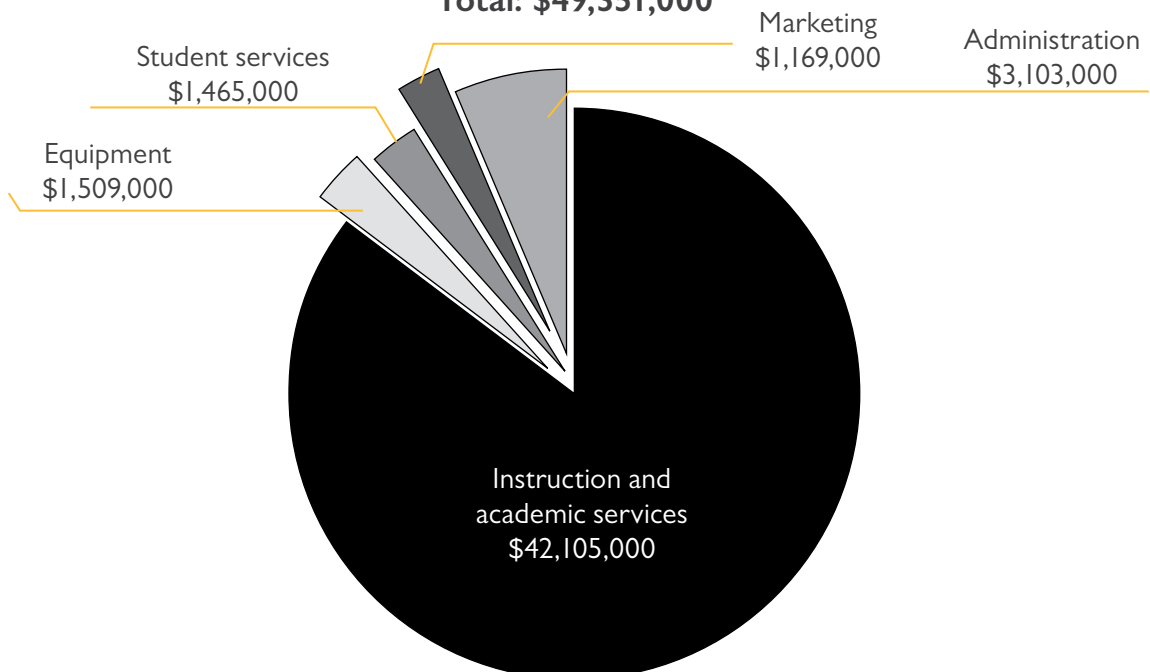
Income

Total: \$49,933,000



Expenses

Total: \$49,351,000



Board of Trustees

(as of May 2025)

David Brodet, Chair

Eli Bahar, Chair, Executive Committee

Prof. Ariela Gordon-Shaag

Maya Shraga Albalak

Prof. Nissim Alon

Dr. Sharon April*

Avraham Asheri

Dr. Hadas Ben-Eli*

Eldad Brik

Ofer Cohen

Mustafa Daka

Prof. Yoram Eden*

Itay Eiges*

Prof. Bertold Fridlender

Racheli Ganot

Sarit Giladi Dor*

Shuki Glazer

Ayelet Golomb Planer*

Gurit Kainnan-Vardi*

Ben Kamenetzky

Dov Keren-Yaar

Prof. Hinanit Koltai

Zvi Koren

Sari Kroizer

Dr. Shirley Kutner

Prof. Amnon Lahad*

Dr. Aharon Lapidot*

Michael Leven

Trisha Margulies

Dr. Milka Matanis-Suidan*

Dr. Sara Melechson

Dr. Zachi Milgrom

Prof. Arie Naor

Dr. Naomi Perl

Dr. Simcha Rozen

Yehuda Saban*

Prof. Rifaat Safadi

Ofer Sosover

Dr. Oded Steinberg*

Dr. Andrea Thau

Yael Tsamir Menashe*



l-r: David Brodet, Prof. Ariela Gordon-Shaag, Dr. Zachi Milgrom, Eli Bahar, Shay Abraham

Administration

Prof. Ariela Gordon-Shaag, President

Dr. Zachi Milgrom, Vice-President

Shay Abraham, Chief Executive Officer

Maya Shraga Albalak, CPA,
Chief Financial Officer

Rami Hazan, Spokesperson and Director
of Public Relations and Marketing

Ayelet Kaminitz, Chief Information Officer

Davida Kutscher, Director,
Institutional Advancement

Yosi Lifshitz, Director of Academic
and Student Administration

Dr. Simcha Rozen, Dean
of Academic Affairs

Gadi Singer, Chief Logistics
and Operations Officer

*Member, Executive Committee of the Board of Trustees

Our Partners

(2022-2025)

Joan & Lowell Abramson, USA
Myron & Elaine Adler Private Foundation, USA
Applebaum Foundation, USA
Augustine Foundation, USA
Avnet, Israel
Azrieli Foundation, Canada
Bader Philanthropies Inc., USA
Bank Hapoalim, Israel
Barbara Epstein Foundation, USA
Bayit Ham, Israel
Beracha Foundation, Israel
Mandel & Madeleine Berman Foundation, USA
Philip & Muriel Berman Family Foundation, USA
Russell Berrie Foundation, USA
Jack Buncher Foundation, USA
Merle S. Cahn Foundation, USA
Canadian Hadassah-Wizo (CHW)
Rachel Liba Cardozo Foundation, USA
Custodia di Terra Santa, Israel
Melvin S. Cutler Charitable Foundation, USA
Aubrey & Marla Dan Foundation, Canada
Hasida Dodi, Israel
Meredith Drench Charitable Trust, USA
Dvir Fund, Israel
Carol Edinger & David Wolfson Robinson, USA
EGL Charitable Foundation, USA
Dr. Ron Eichel, USA
Stuart Fishman, Israel
The Rosalinde & Arthur Gilbert
Foundation, USA
David Gitlin, USA
Cathy and Joshua Glazer, Israel
Irwin & Bethea Green Support Foundation, USA
Dr. Henry Greene, USA
GS Optixx Ltd., Israel
Aaron Gutwirth Scholarship Fund, Israel
Arie & Eva Halpern Family Foundation, USA
John & Sonia Hamstra Family Fund, USA
Jerusalem Foundation, Israel
Karl Kahane Foundation, Switzerland
Benyamin & Esti Kamenetzky
Charitable Fund, USA
Kol Israel Haverim, Israel
Michael & Andrea Leven, USA
Dayle & Aaron Levy, USA
Magbit Foundation, USA
Fred & Trisha Margulies, USA
Pinchas Mendlovic, Israel
David & Inez Myers Foundation, USA
Nash Family Foundation, USA
Yehuda & Anne Neuberger Foundation, USA
Marshall & Harriet Newman, USA
Opticana Ltd., Israel
Optinice Ltd., Israel
Harold L. Perlman Family Foundation, USA
L.E. Phillips Family Foundation, USA
Phoenix Investment House, Israel
Posner-Wallace Foundation, USA
Psifas Foundation, USA
Rachel Foundation, USA
Raymond Frankel Foundation, USA
Rashi Foundation, Israel
Edmond de Rothschild Foundation, Israel
Revital Vision, Israel
Saval Fund, USA
Laura Schor, USA
Joshua & Beth Schwartz, USA
Sela Association, Israel
Sam and Evelyn Silver Foundation, USA
Skymed Ltd., Israel
Dr. Cathy Stern, USA
United Israel Appeal of Canada, Inc.
UIA, Jewish Federations of North America
Robert Wiener Philanthropy, USA
Prof. Beywl Wolfgang, Switzerland
Dr. Howard & Barbara Woolf, USA

Editor: **Shimon Arbel**,
Interim Director, Institutional
Advancement

Content: **Keri Rosenbluh**

Design: **Etti Vaknin**,
Graphic Designer

Photos: **Netanel Tevel**,
Shachar Regev,
Gil Wolfson

All information is accurate
as of May 1, 2025



37 Hanevi'im Street, Jerusalem 9101001, Israel
Tel: +972-2-629-1911, Email: President@jmc.ac.il

www.jmc.ac.il/en/